

# Datasheet

This product datasheet has been provided by  
John Godrich in Partnership with Admix



**New**

### High shear and high flow in a compact sanitary design

Admix expands their comprehensive product line with the introduction of a new in-tank, bottom mount unit. The FlowShear bottom mount disperser & emulsifier offers unrivaled versatility allowing processors to mix a wide range of batch sizes with minimal starting liquid levels.

The FlowShear's unique mixing head design provides high shear and superior flow by combining a rotor-stator with an optional impeller utilizing advanced Jetfoil™ technology. This Ultra sanitary machine provides maximum versatility to meet your most demanding processing needs.

### The FlowShear Advantage

- ✓ Low starting liquid level and small batch capability
- ✓ Substantial reduction of air entrainment
- ✓ Reduces the need for secondary agitation
- ✓ Can be combined with scraped surface or counter rotating agitators
- ✓ Optimized for high viscosity personal care, pharmaceutical and food products



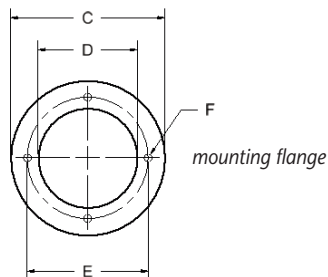
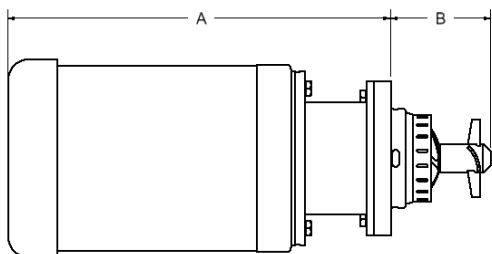


## FlowShear Specifications

The FlowShear series of stainless steel mixers is available to suit your specific design and mounting requirements.

Model	Motor (kW)	60 Hz Speed RPM	Rotor Dia. (mm)	Jetfoil™ Dia. (mm)	Max Volume (See Note 1) (liters)	Tip Speed (m/sec)
FS-425	7,5	3.450	107,95	0	322	19,51
FS-425F	11,5	3.450	107,95	101,6	776	19,51
FS-500	18,5	3.450	127	0	606	22,95
FS-500F	22,5	3.450	127	119,4	1.381	22,95
FS-800	22,5	1.750	203,2	0	1.893	18,63
FS-800F	30	1.750	203,2	190,5	4.353	18,63
FS-900	37,5	1.750	228,6	0	3.123	20,95
FS-900F	55	1.750	228,6	215,9	7.570	20,95

Note 1: These charts are only an estimate. Actual product viscosity and other possible agitation in the vessel could increase or decrease maximum batch size.



Model	Dimensions (mm)					
	A*	B	C	D	E	F
FS-425	660,4	127	228,6	152,4	184,15	12,7
FS-425F	787,4	152,4	228,6	152,4	184,15	12,7
FS-500	812,8	152,4	279,4	177,8	228,6	12,7
FS-500F	863,6	177,8	279,4	177,8	228,6	12,7
FS-800	914,4	203,2	279,4	177,8	228,6	12,7
FS-800F	990,6	254	330,2	241,3	279,4	15,31
FS-900	1.016	228,6	330,2	241,3	279,4	15,31
FS-900F	1.041,4	304,8	330,2	241,3	279,4	15,31

\*Based on TEFC motors

## Why FlowShear?

The FlowShear creates an ideal balance between high shear and high flow by controlling residence time within the work zones, and by generating high tank turnover rates throughout the vessel, reducing or eliminating the need for secondary agitation. This innovative technology reduces batch times within a broad range of thin or viscous products, and allows maximum utilization of vessel geometry.

Our many years of sanitary design expertise is incorporated into the FlowShear for easy cleanability and full compliance with regulatory and cGMP requirements.

## Features and benefits

- Allows full shear at volumes as low as 5% of finished tank volume, ideal for low water phases
- Self-draining sanitary seals with our exclusive auto seal shut off to prevent premature seal failure
- Compact mounting flange with sanitary O-ring design
- Designed with minimal protrusion allowing easy addition to scraped surface and counter rotating equipped vessels
- Ideal for low water / gum phase creation
- Total washdown and CIP capability
- Low maintenance design for minimum downtime – no bushings, wear sleeves, shims or bearings to wear out
- Optional impellers and stators to meet specific shear and flow requirement

For more information:

EMPLOYEE OWNED ...  
CUSTOMER FOCUSED

# Datasheet

This product datasheet has been provided by  
John Godrich in Partnership with Admix

